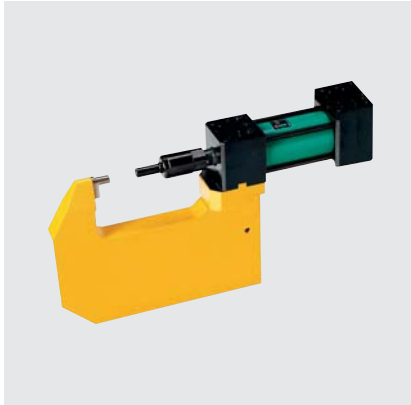


TOX®-Machine Mount Tongs Type TZW with hydraulic drive RZH Version 200



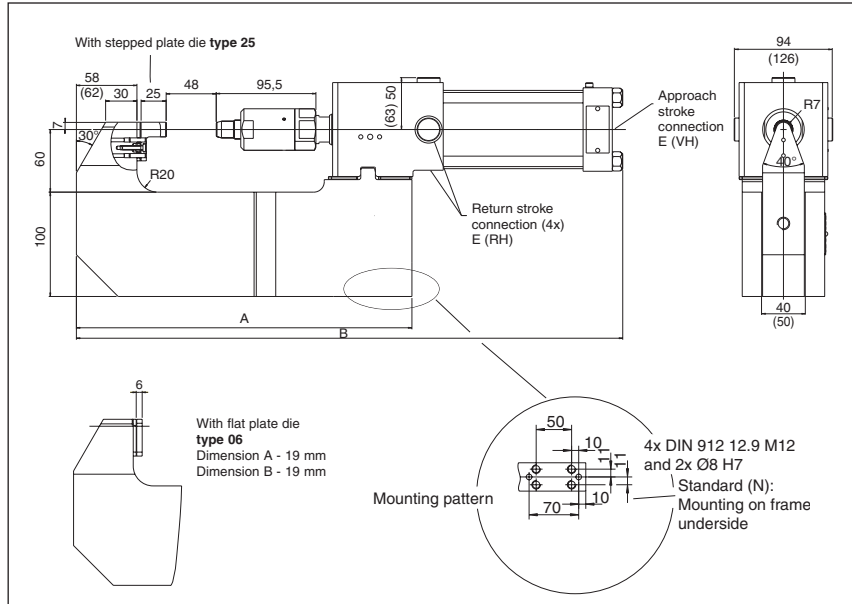
The TOX®-Machine Mount Tongs type TZW was developed to meet the requirements of the white goods industry.

The hydraulic drive RZH can be powered by a central hydraulic system or by our TOX® pneumohydraulic intensifier.

The media used for the return stroke determines the cylinder type, a RZHL (air return) or RZHO (oil return). See catalog TOX®-Pneumo-Hydraulic Unit Type KT for additional information.

The stroke adjustment for RZH drives series 200 is done at the TOX® tooling using shim plates.

The precision mounting between the drive and frame guarantees for concentricity. (See data sheet TOX® 10.08 for additional information).



Press force (Tonnage)		A mm	B mm	E (VH)	E (RH)
50 kN	(05)	392,5	524	G 3/4"	G 3/8"
80 kN	(08)	343,5	592	G 3/4"	G 1/2"

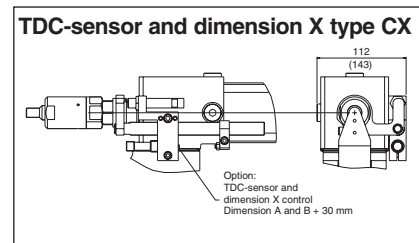
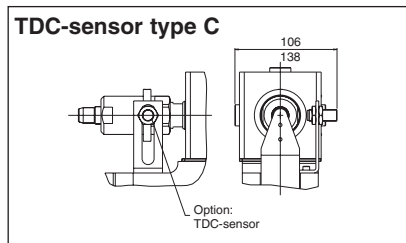
Frame shape and tooling have been optimized for clinching applications. The advantages of this single step, cold forming joining process can be appreciated for joining of 2- or 3-layer sheet metal with coating or with intermediate foil layers. The TOX®-Round Point is a non-cutting process, in which the surface coating is not

damaged (See catalog TOX®-Joining Systems for additional information). The design shown above does not require additional tool guidance. Two die variants are available to optimize the tongs to the geometry of the work-piece. In addition, these tongs are capable of high cycle times.

Ordering Example:

- TZW 05N25LCX
- └─ TDC-sensor type
 - └─ RZHL or RZHO
 - └─ Die type
 - └─ Normal (=N) or with indexing slide
 - └─ Press force (Tonnage)
 - └─ Machine Mount
 - └─ Tongs type

Standard optional solutions for position sensing:



We also offer an indexing slide, which attaches to the existing mounting pattern on the frame:

Option: indexing slide type F with stroke adjustment and pneumatic cylinders. Up to 50 mm stroke to clear the TOX® button or any embossment on the parts. Includes end position sensor.

